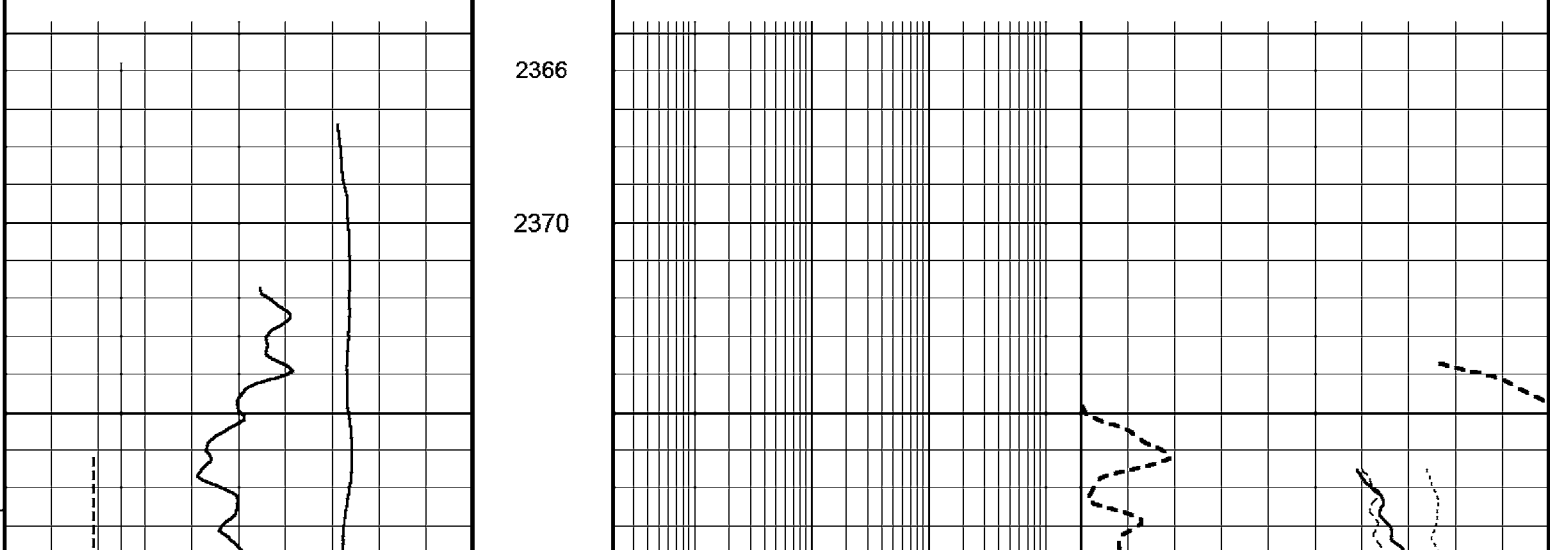
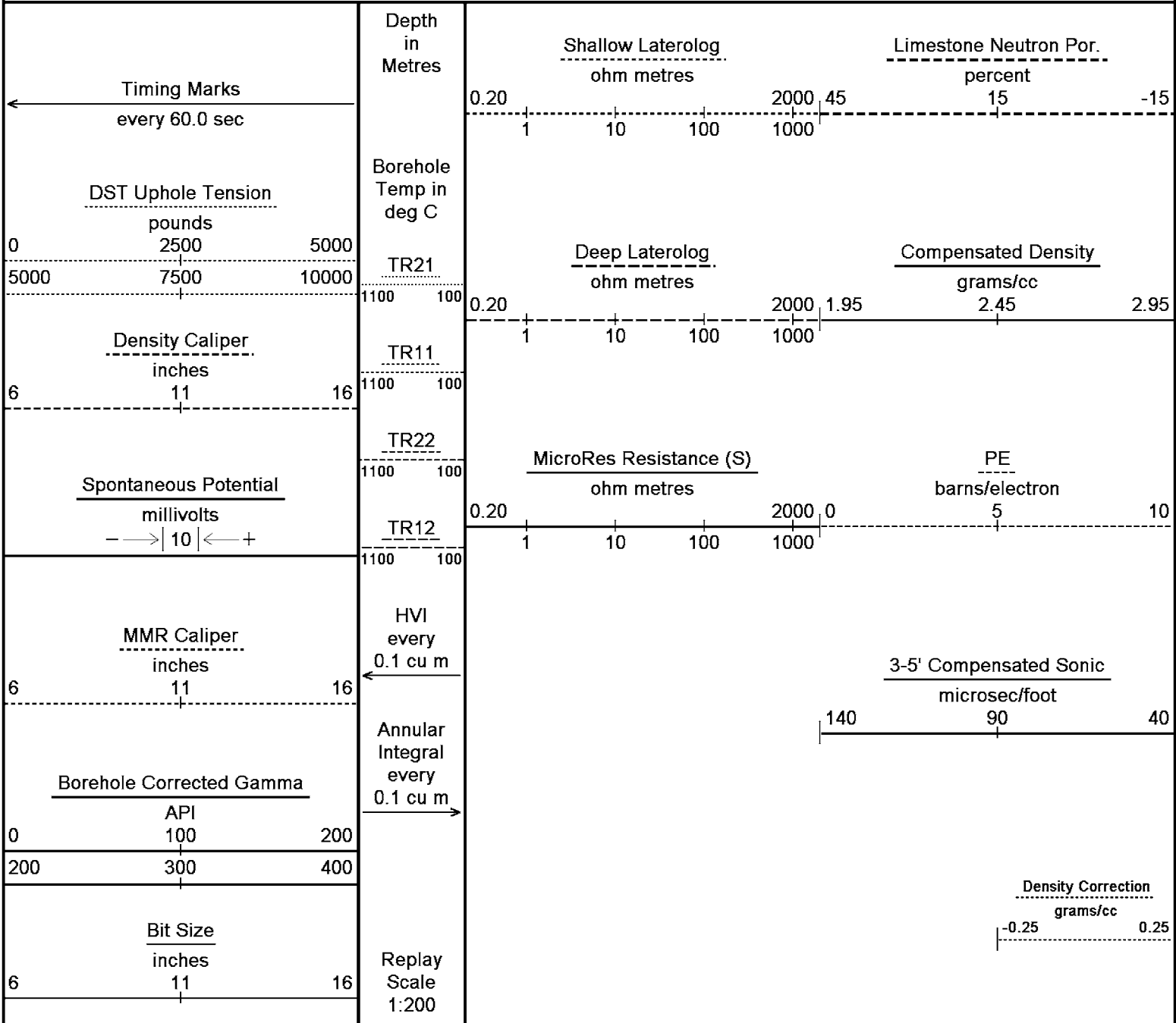
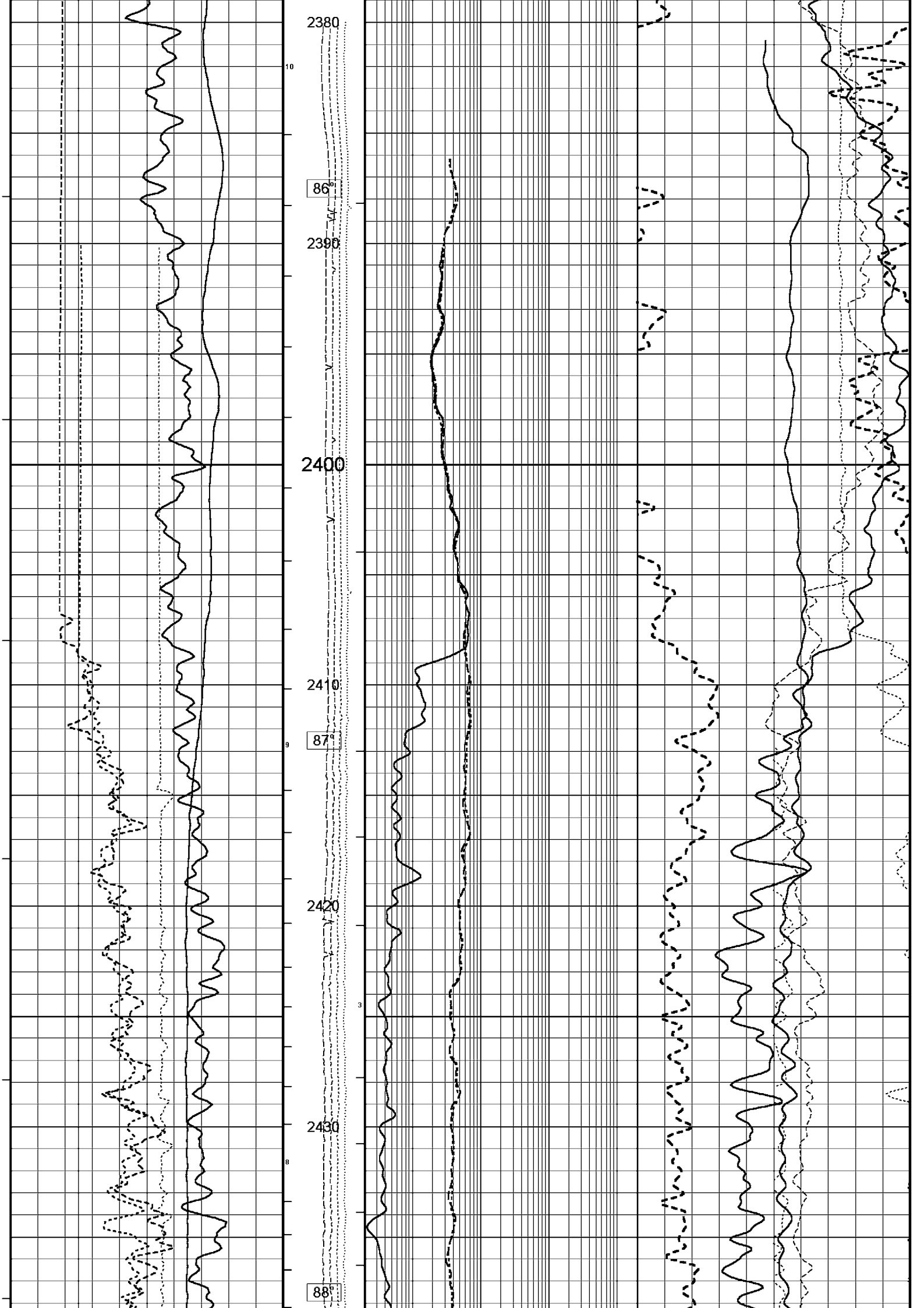


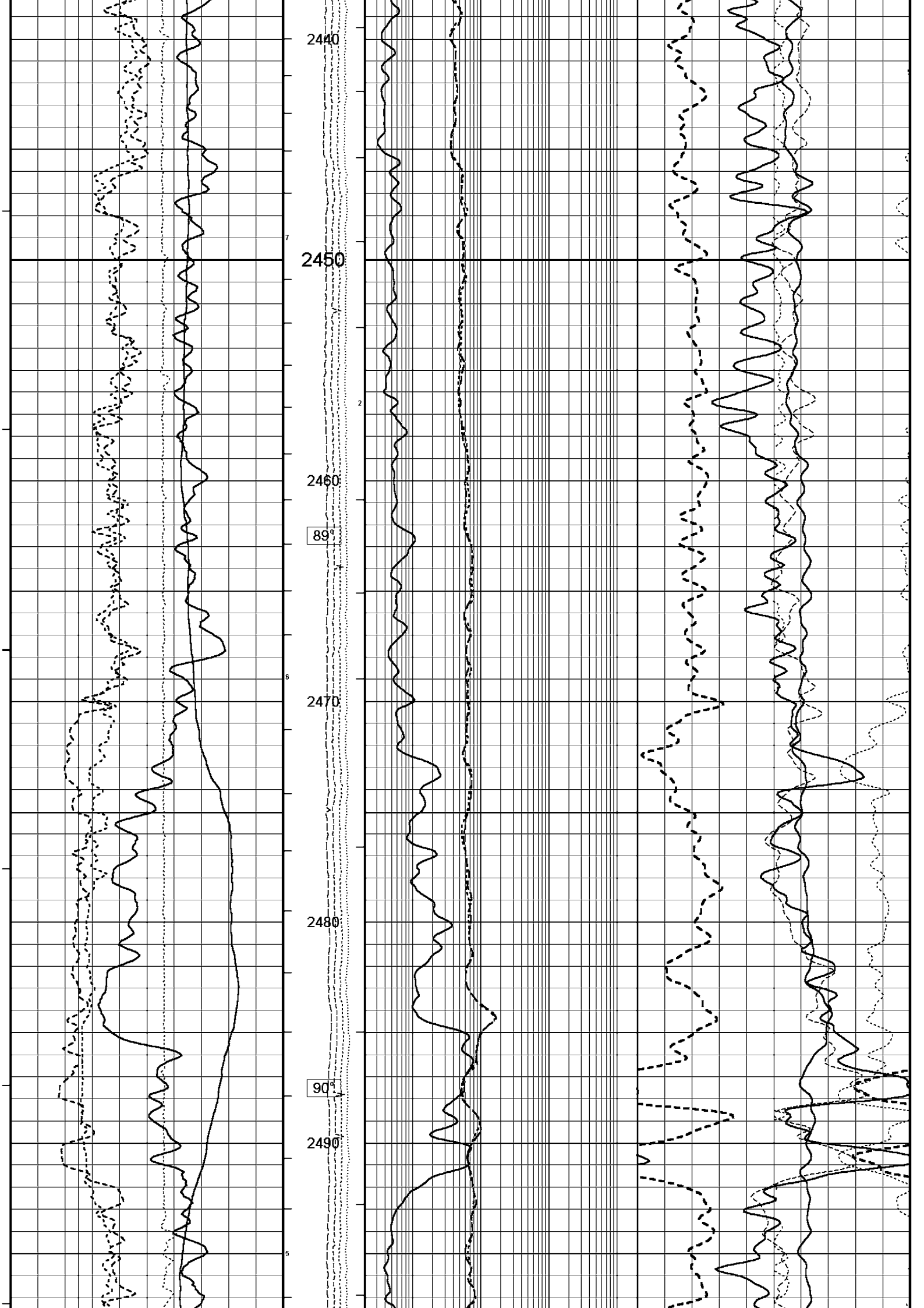
All interpretations are opinions based on inferences from electrical or other measurements and we cannot, and do not, guarantee the accuracy or correctness of any interpretations, and we shall not, except in the case of gross or wilful negligence on our part, be liable or responsible for any loss, costs, damages or expenses incurred or sustained by anyone resulting from any interpretation made by any of our officers, agents or employees. These interpretations are also subject to our general terms and conditions in our price schedule.

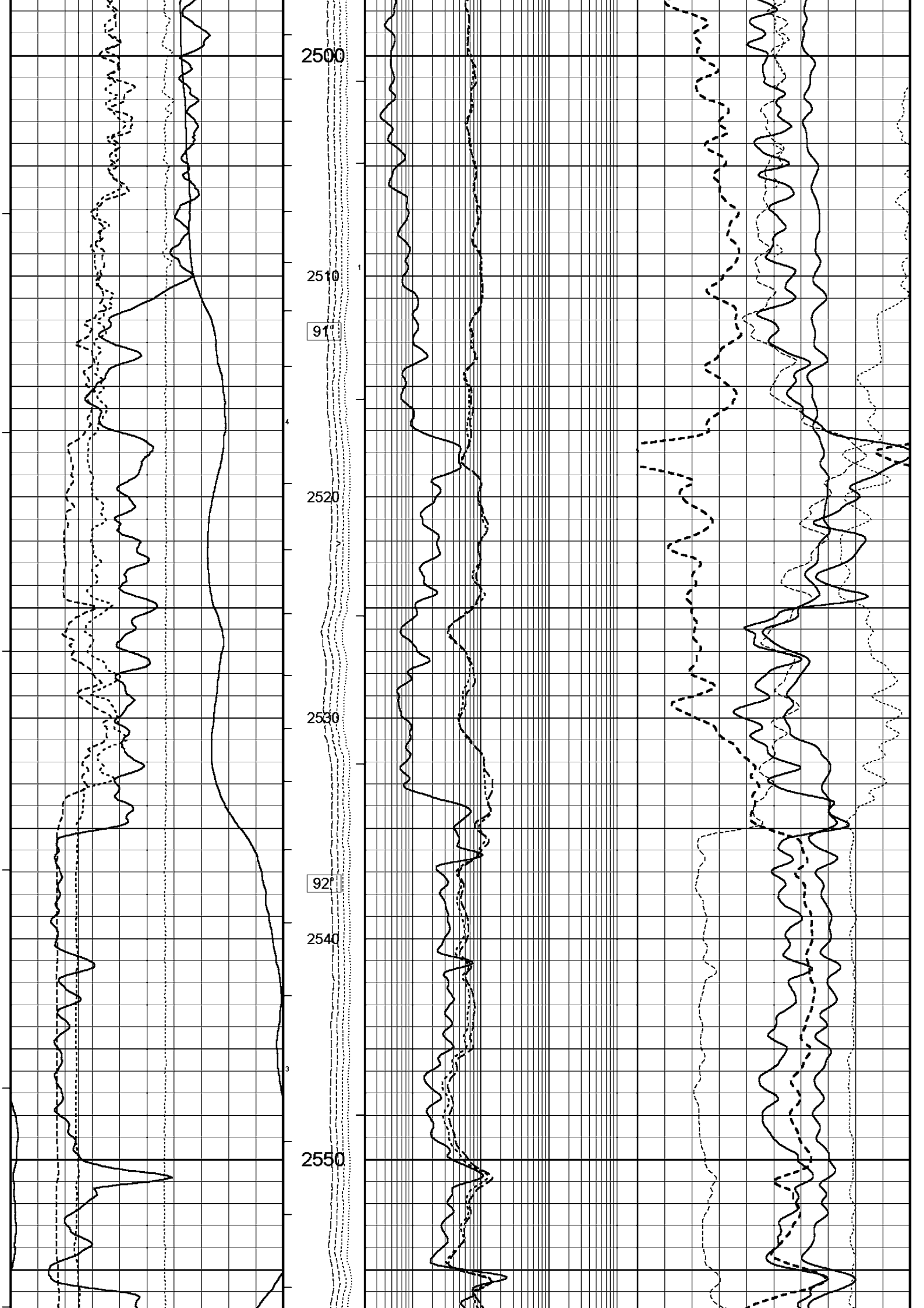
MAIN LOG 1:200

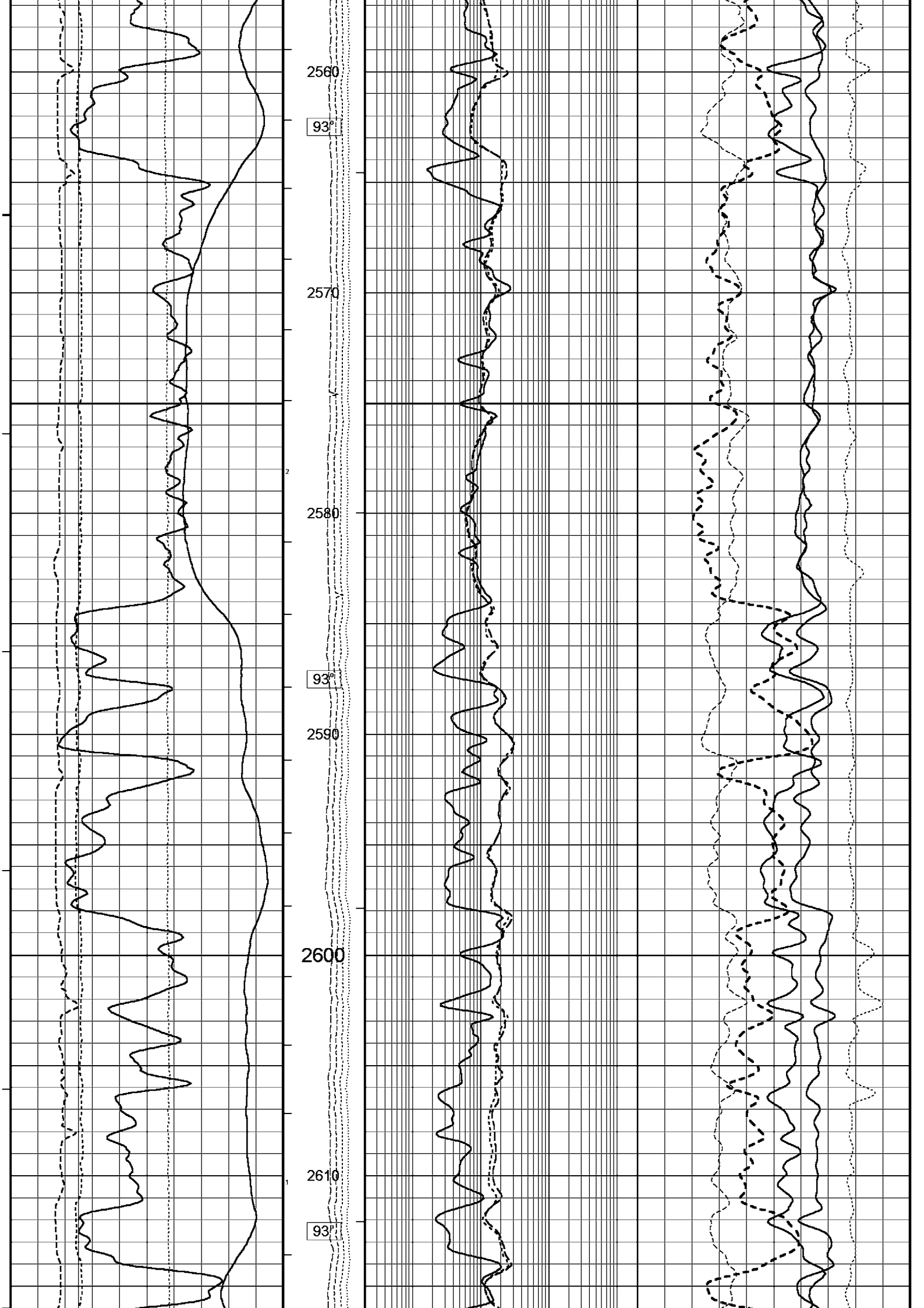
Depth Based Data - Maximum Sampling Increment 10.0cm Plotted on 04-OCT-2005 01:22
 Filename: C:\Data\Origin\Childers Cove 2\SUPERCOMBO_4_003.dta Recorded on 04-OCT-2005 00:45
 System Configuration Dates: Logged 17-JUN-2004: Plotted 17-JUN-2004:

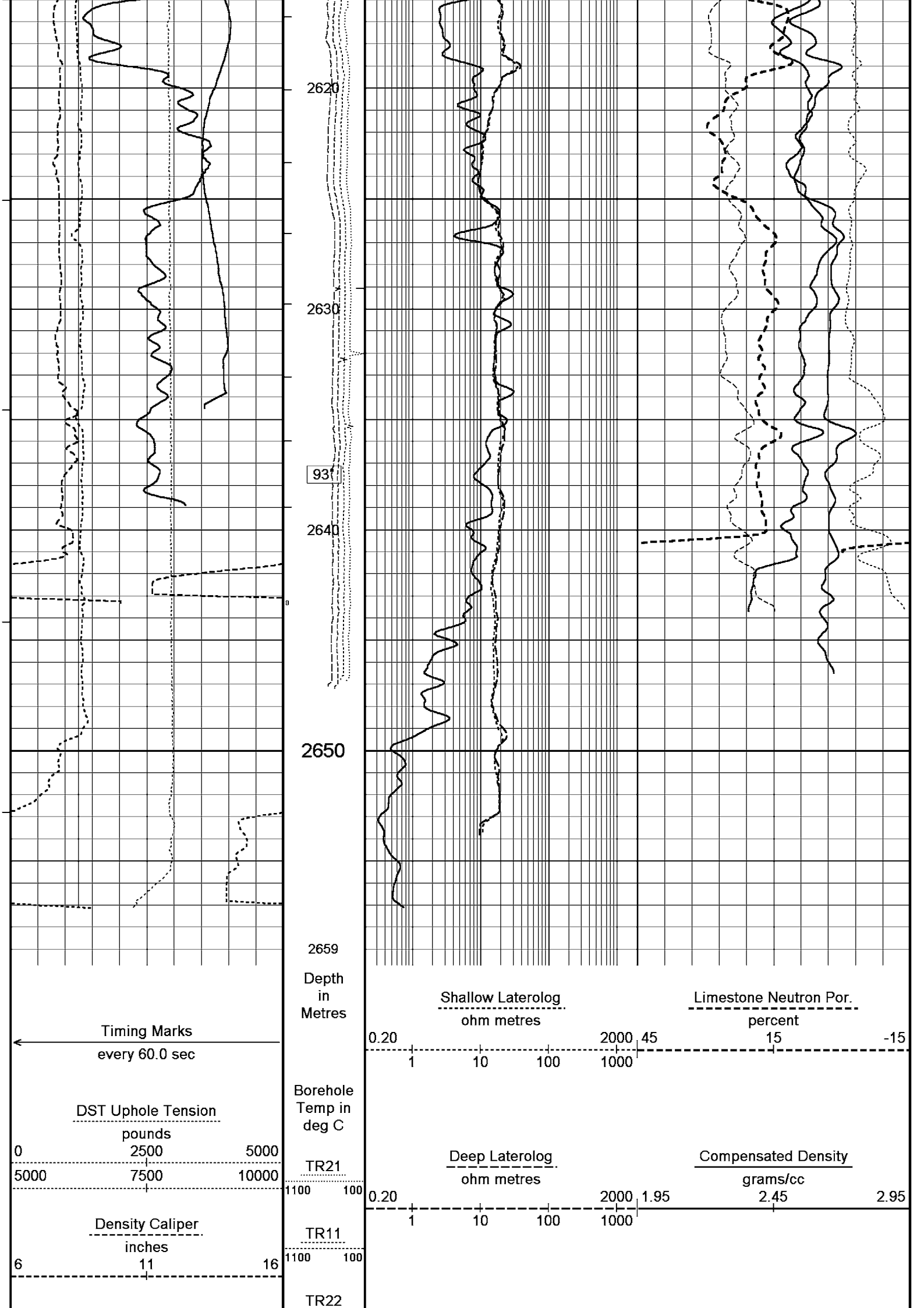


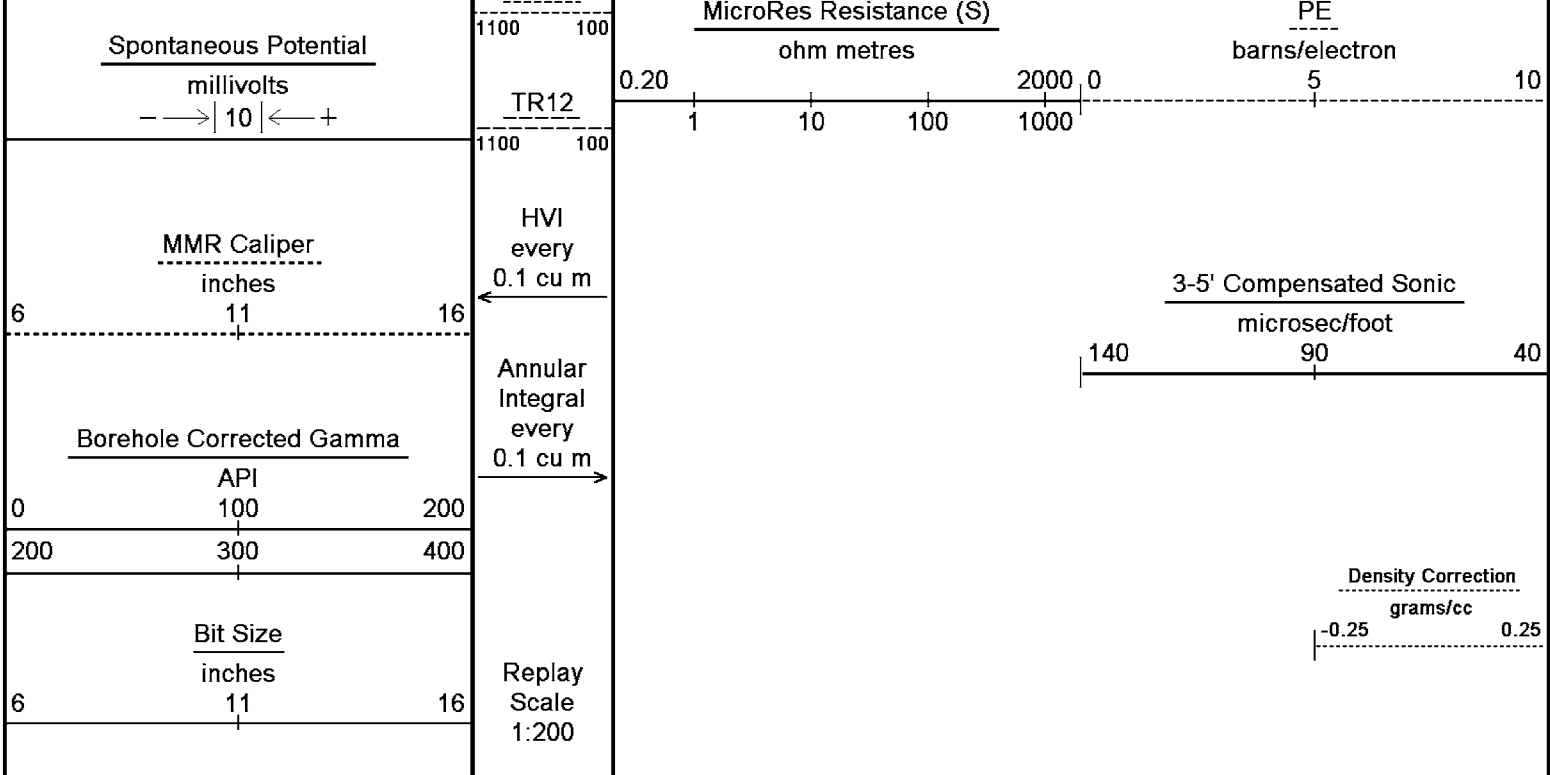












Depth Based Data - Maximum Sampling Increment 10.0cm
 Plotted on 04-OCT-2005 01:22
 Filename: C:\Data\Origin\Childers Cove 2\SUPERCOMBO_4_003.dta
 Recorded on 04-OCT-2005 00:45
 System Configuration Dates: Logged 17-JUN-2004: Plotted 17-JUN-2004: